



## The Whittier Weekly

10/29/2020

Whittier International Elementary  
315 W. 26th St. Minneapolis, MN 55404

**THE BEST SOURCE OF THE MOST UPDATED WHITTIER INFO IS ON OUR WEBSITE:**

<http://whittier.mpls.k12.mn.us>

### **IMPORTANT NOTICE ABOUT ELECTION DAY, TUESDAY, NOVEMBER 3:**

Since Whittier School is a polling location, there will be no device or supplies pick-up on Tuesday, November 3, Election Day. There will be no Whittier staff in the building on Tuesday, November 3. Distance Learning will proceed as normal on that day.

Meal box pick-up sites will be closed on Election Day, November 3, at schools that are polling places – **THAT MEANS WHITTIER IS CLOSED FOR FOOD PICKUP ON THIS DAY!!**

Nine meal box pick-up sites will remain open on November 3 with extended hours of 9 a.m.-3 p.m. (and 9 a.m.-5 p.m. at South High School):

- Central: Anwatin
- Northwest: Henry, Hmong International Academy, Nellie Stone Johnson
- Northeast: Heritage
- South: Folwell, Sanford, South (open until 5 p.m.), Wellstone

**No school on Friday, November 6**

### **Attention Third Grade Families ONLY:**

**On Wednesday, November 4, ALL THIRD GRADERS will do asynchronous independent work, as third grade teachers have an all-day meeting.**

## Note from Principal Lamberty

---

Good Afternoon Whittier Families - This is Principal Lamberty reaching out and checking in.

Yesterday, families received a text message and phone call from Minneapolis Public Schools regarding the shift toward Phase III of Distance Learning, which is to bring only those students back into the building who are most in need of in-person supports. I want to clarify for all families, that this will be a gradual process, starting with ensuring safety measures are in place for both students and staff. Whittier has begun to identify the staff who are able to provide in-person supports. We will then contact families of students who have special needs and would benefit from in-person supports (for example, students with IEPs, or learning English as a new language), to find out who would be comfortable sending their child to Whittier for in-person supports. After we have staff and students identified, the district will schedule transportation and culinary services that will be needed. As you can see, it is a long process, I am estimating that we will be prepared to receive students either right before, or right after, Thanksgiving Break. Again, this is all dependent upon Community COVID cases.

I appreciate your patience and flexibility as we do everything we can, to begin to get students back into the school for in person learning, in the safest way possible. I want to reassure you, that no school staff OR student will be required to engage in in-person learning during Phase III.

For families who are not comfortable with in person learning, Distance Learning will remain a choice for the rest of the school year.

From our PTA, remember It's not too late to make an online purchase from this year's online book fair! Visit the school website for all the info on how to order Scholastic books now through Saturday, and all purchases benefit our school. Thank you to Whittier PTA for organizing this year's book fair!

If you have questions about Phase III Learning, or Whittier's transition to becoming a Community School, or the upcoming School Request timeline, please join me at Coffee with the Principal every Friday, from 10:30-11:00.

There is a lot happening these days, please know that all Whittier Staff is here to support you and make sure you have accurate and timely information. You can find us at Door 15 Monday-Friday 8 am-4 pm, in person. Or you can email or call us as well.

Be well, be kind to yourself and others, and don't forget to take time to just BE

Laurie Lamberty, Ed.S. - Principal, Whittier International Elementary

[Laurie.Lamberty@mpls.k12.mn.us](mailto:Laurie.Lamberty@mpls.k12.mn.us)

## (Virtual) Coffee with the Principal

---



Principal Lamberty is inviting you, parents, to a scheduled Zoom meeting for virtual Coffee with the Principal. Fridays, 10:30 – 11:00 AM, virtual, of course! Join the Zoom Meeting by clicking on the link below – this information is also on our website:

<https://us02web.zoom.us/j/89855515281?pwd=aWQzR21DM045SEdJc1ZrVTZuTFRrZz09&from=msft>

Meeting ID: 898 5551 5281

Passcode: 3ktrzt

## Possible “Bell Time” Changes

---



As part of the Comprehensive District Design, our district is considering "Bell Time" changes. This means that they are looking at the start and end times for all schools and may be making changes. Please take a moment to review the information in this presentation, and on the website linked below. If you have any questions, comments or concerns, please reach out to Principal Lamberty and share your thoughts. Feel free to join her at her next Coffee with the Principal! (Friday mornings, 10:30 AM, via Zoom – see above)

<https://mpls.rev.vbrick.com/#/videos/bbcdb214-cc32-439b-a367-75de082fc2ec>

[https://transportation.mpls.k12.mn.us/bell\\_time\\_schedules](https://transportation.mpls.k12.mn.us/bell_time_schedules)

## MacPhail Center for Music and Whittier International

---



### MacPhail Music Updates (4th and 5th grade)

Greetings, Whittier piano and violin families,

We hope that you are all well. MacPhail instruction will begin the week of November 2<sup>nd</sup>. Online platforms will be ready, and you will receive an email with schedules this week! **Please remember to pick up your loaner instruments if needed, and music books for 4<sup>th</sup> graders.**

Thank you again for your patience and support as we get ready to launch our program.

The School Partnerships Team at MacPhail Center for Music

If you have any questions ... please contact **IB Coordinator Libby Dominguez** at [libby.dominguez@mpls.k12.mn.us](mailto:libby.dominguez@mpls.k12.mn.us).

### Actualizaciones de MacPhail Music (cuarto y quinto grado)

Saludos, familias del Programa de piano y violín de Whittier,

Primero que todo, esperamos que se encuentre bien. La instrucción de MacPhail comenzará la semana del 2 de noviembre. ¡Las plataformas en línea estarán listas y recibirás un correo electrónico con horarios esta semana! Por favor recuerde recoger sus instrumentos prestados si es necesario y libros de música para estudiantes de 4<sup>o</sup> grado.

Gracias nuevamente por su paciencia y apoyo mientras nos preparamos para lanzar nuestro programa.

El equipo de asociaciones escolares en MacPhail Center for Music

Si tiene alguna pregunta ... comuníquese con la **Coordinadora del IB, Libby Dominguez**, escribiendo al siguiente correo electrónico: [libby.dominguez@mpls.k12.mn.us](mailto:libby.dominguez@mpls.k12.mn.us).

## Physical Education (PE/Gym) with Ms. Bryand

---

PE activities are posted on the specialists Website:

<https://sites.google.com/mpls.k12.mn.us/whittierspecialists/home>

Students can get to this site several ways. There are links on the classroom teachers Seesaw, google classroom & Clever pages and the Whittier website. <https://whittier.mpls.k12.mn.us/> click staff then specialists.

You need to know your child's email for the username and password so that you can help them log in. You can also get technical support by bringing your device to Whittier at door 15, circle drive at 26<sup>th</sup> and Grand Ave or call 612-668-0088

The best way to communicate with Ms. B is email: [nancy.bryand@mpls.k12.mn.us](mailto:nancy.bryand@mpls.k12.mn.us)

# School Supplies & Tech Support

---



Come pick up your art supplies, school supplies and iPad (grades High 5 – Grade 2) or Chromebook (Grades 3 – 5) and hotspot (if you need one). Please call before coming if you need a device to make sure we have some available.

See below what additional supplies we now have ready for pickup:

**High 5:** On Monday, November 2, there will be new packets for all High 5 students. **Please plan on picking up these wonderful packets next week, Monday, Nov. 2, Wednesday, Nov. 4 or Thursday, Nov. 5** (no school on Friday, Nov. 6). The Whittier School Building will be closed on Tuesday, Nov. 3 for parents and staff - DO NOT COME ON NOV. 3! It is election day and the school will not be open for pick up. (The school is open for voting only!).

**High 5 Packets include:** New colored wipe board markers, erasers, playdough, playdough letter mats, cutting practice worksheets, math group packets, alphabet books, etc. PLEASE KEEP THESE ITEMS ONLY FOR DISTANCE LEARNING! We will be using these materials in small groups, large group live learning, and as added practice on SeeSaw. Thank you in advance for coming to pick these up for your student. **Remember, you can pick these up at Door 15 at Whittier, Monday, Wednesday, or Thursday next week.** Thank you!

**Kinder and 2<sup>nd</sup> Grade:** Phonics!

**1<sup>st</sup> Grade:** Phonics, Science, and Math

**2<sup>nd</sup> Grade:** Unit 2 Math Books and Science Bags - *The science bags are from a scholarship we received from the MN Arboretum. We will use the materials in the bag for our science classes during the next 3 weeks. Please do not open the bag until your child's teacher tells you to do so.*

**3<sup>rd</sup>, 4<sup>th</sup> & 5<sup>th</sup> grades:** Unit 2 Math Books, Science Kits\*

**5<sup>th</sup> Grade:** A novel, "The Color of My Words" (in addition to the above)

**All grades:** More PE equipment TBD – stay tuned

\*HANDS OFF THE SCIENCE KITS UNTIL YOUR TEACHER SAYS TO OPEN THEM FOR CLASS!!

**We also have iPad cases (for both sizes of iPads). If you would like one, please bring in the iPad with you, so we are sure it will fit!**

Come to Door #15 at Circle Drive – ring the buzzer and we will be out to help you! **We will be here next week Monday, Wednesday and Thursday, 8:00-4:00 (11/2, 11/4, 11/5).**

**Whittier Tech Support:** We are here in person **next week Monday, Wednesday and Thursday, 8:00-4:00 (11/2, 11/4, 11/5).**

We also have **Somali in-person tech support** Monday and Wednesday afternoons, 12:00-4:00 with Mr. Ahmed Warsame.

If you would prefer to call the help desk, the number is 612-668-0088 or the [MPS Tech Support Website](#) is also very helpful.

## Music with Ms. Bennett

---

### Starting with Week 5, exit forms will be part of students' grades.

Be sure that your child is successfully submitting the exit form at the end of each week's lesson. Students who did not complete their Week 5 Exit Form have received an assignment in Seesaw. Contact Ms. Bennett if you want to know if your child is getting them completed or if you need help submitting them.

Music lessons are hosted on the [New Music Website](#).

The **site is accessible only to MPS accounts**, so be sure that you know your child's username and password so that you can help them **log in to the browser**.

This is different than logging into Clever or Seesaw, etc.; **they must be logged into the browser to be admitted**. There are links placed in the Music Seesaw & Clever pages as well.

Check with your teacher or the Whittier Office to find help.

The best way to communicate with Ms. Bennett is by email: [kbennett@mpls.k12.mn.us](mailto:kbennett@mpls.k12.mn.us)

## Shop the 2020 Whittier Book Fair

---

Support our school & shop our  
**ONLINE FAIR**



### 2020 Whittier Virtual Book Fair NOW THROUGH OCT 30!

Thank you to all who have shopped our Scholastic Book Fair online. There's still time to order books to ship to your home! Visit our homepage now through Friday, October 30<sup>th</sup> to shop over 6,000 items including new releases, best sellers and value packs. *All purchases benefit our school!*

LINK: <http://www.scholastic.com/bf/whittiermpls>

## Community Ed Corner – Art Buddies Pen Pals Update

---



**Community Education**

All Art Buddies Pen Pals should have received their first letter by now! You'll see the pre-stamped return postcards for your student to send a letter back to their pen pal. If you haven't received your package yet, let Mr. Nacho know. We will figure it out!

As always, give us a holler if you have any questions!

Jeff "Nacho" Carlson

Community Education Coordinator, Whittier International Elementary

315 West 26<sup>th</sup> Street, Room 156; Mpls, MN 55404

[Jcarl001@mpls.k12.mn.us](mailto:Jcarl001@mpls.k12.mn.us) / 612-205-8828

## Educational Benefits – Free & Reduced Lunch

---

[Complete the Application for Educational Benefits online](#). – follow the link!

## Hennepin County Library Services and Resources

---

Click here for an [overview of current Hennepin County library services](#) that may be helpful for you and your child, or visit the [Hennepin County website](#) here.

## Social Work Corner

---



**Dear 3-5 Grade Parents,**

Every year I host **social emotional learning groups for students in 3, 4, and 5<sup>th</sup> grade**. Even though we are in distance learning, students may continue to benefit from these groups. Groups may focus on **emotion regulation, social skills, mental wellness, grief and loss, transitioning to middle school, mindfulness, or**

**any other area** in which there is an identified need. If you are interested in having your student participate in a social emotional learning group or have any questions, please complete the form below, contact me at 612-293-5505 (call or text) or email me at [tasha.novotny@mpls.k12.mn.us](mailto:tasha.novotny@mpls.k12.mn.us) .

[Social Emotional Group Interest Form](#)

### **Nowhere to Call Home?**

**If your family is in temporary or unstable housing**, then you may be protected under the McKinney-Vento Act. Children and youth experiencing homelessness have the rights to:

- Stay in the same school.
- Get school transportation, even across district lines.
- Immediately enroll in school without education records, immunization records, or proof of residency.
- Participate fully in school activities, including before and after school.
- Get free school meals.
- Receive other educational services.

If you have any questions or are in need of support, please reach out to your school social worker.

### **Resource Reminder:**

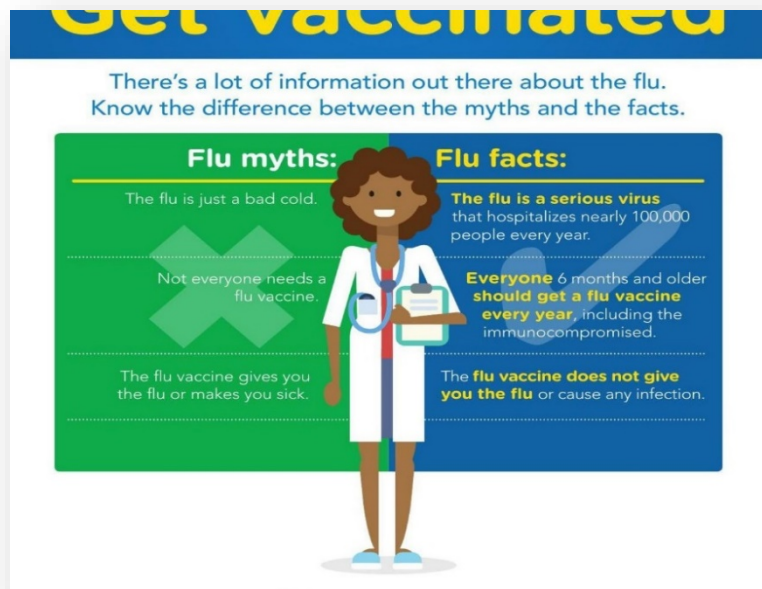
We know recent local and worldwide issues have created a great deal of anxiety and stress for our families. We also recognize that some of our families are coping with many other losses and hardships.

**School social workers and our interns are here to support you and your students in a variety of ways.** If you are interested in resources or support, please complete the form below or contact your school social worker.

[Resource Request Form](#)

**PreK-2<sup>nd</sup> Grades: Laura Sanchez Garcia #612-234-7736**

**3-5<sup>th</sup> Grade and Federal Setting 3: Tasha Novotny #612-293-5505**



## HELLO WOLVES!

**Just want you to know...**

Please let us know (include your contact information if you want to be contacted) if you have questions or if we can provide additional information or be of help.

Sincerely,

AKPENE ASEMPA, RN, PHN, LSN

Phone: 612-692-0062

Email: [Akpene.Asempa@mpls.k12.mn.us](mailto:Akpene.Asempa@mpls.k12.mn.us)



PATARNOLD, HSA

Phone: 612-668-4186

Email: [Patricia.Arnold@mpls.k12.mn.us](mailto:Patricia.Arnold@mpls.k12.mn.us)

## Whittier Parent Teacher Association (PTA)

---

Whittier International  
Elementary School  
**PTA**



You are invited to join our brand-new [Whittier International School Community](#) group on Facebook! This group is for the Whittier International School community to connect to each other. Ask questions! Share information! Offer tips and tricks that help your student in distance learning!

The Whittier Parent-Teacher Association administrates the Facebook group, but you do not need to be a PTA member to join. Everyone is welcome.

If you want to support the PTA, you can [become a PTA member here!](#) A paid membership is not necessary to be active in the PTA at Whittier, but the support of people like you pays for MacPhail music lessons, requested supplies for teachers and students (we bought apps and online tools for teachers last spring), staff appreciation gifts, and membership scholarships. Annual membership in the PTA is \$8 for an individual or \$15 for a family membership (two members). Regardless of ability to pay, all parents, caregivers, teachers, and staff are welcome and encouraged to participate in the PTA. Free scholarship memberships are available if your budget does not allow for the expense. Please contact us at [whittier.pta.mpls@gmail.com](mailto:whittier.pta.mpls@gmail.com) to inquire about a scholarship.

## Free School Meal Boxes for All Youth

---



All families are invited to pick up free school meal boxes for their children. School meal boxes contain five breakfasts and five lunches and meet Minneapolis Public Schools Culinary & Wellness Services' (MPS CWS) high standards for nutrition and quality ingredients. In every box, children will find school favorites, whole grains, fresh fruits, and vegetables. Milk is offered on the side, up to ten milk cartons per box.

- All youth 18 & under can participate.
- Youth do not need to be enrolled in MPS.
- Youth, parents, or siblings can pick up one box per child, per week.
- Pick up at any of the 29 school **sites** - no registration required.
- All sites are open Monday through Friday, most from 11 a.m. to 3 p.m. and a few have extended hours of 11 a.m. to 5 p.m. (**Whittier is available until 5 p.m.**)

**WHITTIER FOOD PICKUP: 11:00 AM – 5:00 PM Monday – Friday at Door #8 – THAT'S THE GARAGE DOOR.** Please knock (don't buzz) and someone will be out to help you. You will need to wear a mask.

**\*\*IF SCHOOLS ARE CLOSED (NEXT DATE IS 11/6) THERE IS NO FOOD PICKUP AVAILABLE\*\***

**Meal box pick-up sites will be closed on Election Day, November 3, at schools that are polling places – THAT MEANS WHITTIER IS CLOSED FOR FOOD PICKUP ON THIS DAY!!**

Nine meal box pick-up sites will remain open on November 3 with extended hours of 9 a.m.-3 p.m. (and 9 a.m.-5 p.m. at South High School):

- Central: Anwatin
- Northwest: Henry, Hmong International Academy, Nellie Stone Johnson
- Northeast: Heritage
- South: Folwell, Sanford, South (open until 5 p.m.), Wellstone

Please follow this link for more information about [School Meal Box Pickup](#).

## Beep! Beep! Beep!

---



Do you hear that beeping sound? Could be you need to change the batteries in your smoke alarm. Take it down from the wall and see what kind of batteries it takes – AA? 9V? Check it out, replace the batteries, and the beeping will stop, and you and your family will be safe.



# Important Information about Voting November 3

---



## GET OUT THE VOTE!!

Click here for information on [how to vote](#).

## Election Day is approaching: Make a plan to cast your ballot

We're just DAYS away from Election Day, Nov. 3. Early voting began on Sept. 18 and the City has mailed over 130,000 requested mail ballots out to voters. Voting by mail is CDC recommended this year, but you may still vote in person either early or on Election Day.

The Early Vote Center, 980 E. Hennepin Ave., makes [early in-person voting](#) more convenient for Minneapolis voters. It's especially helpful to people who need language support or other special accommodations, such as curbside voting. While we are in a pandemic, voting early can help people avoid lines and crowds at polling places on the day of the election.

The Early Vote Center's hours are 8 a.m.-4:30 p.m. Monday-Friday. The center will have extended hours for the final two weeks of voting, including Saturday and Sunday hours. For the last seven days of early voting, the City will open two additional Early Vote Centers. [All early voting hours and locations are posted on the Elections & Voter Services website](#).

